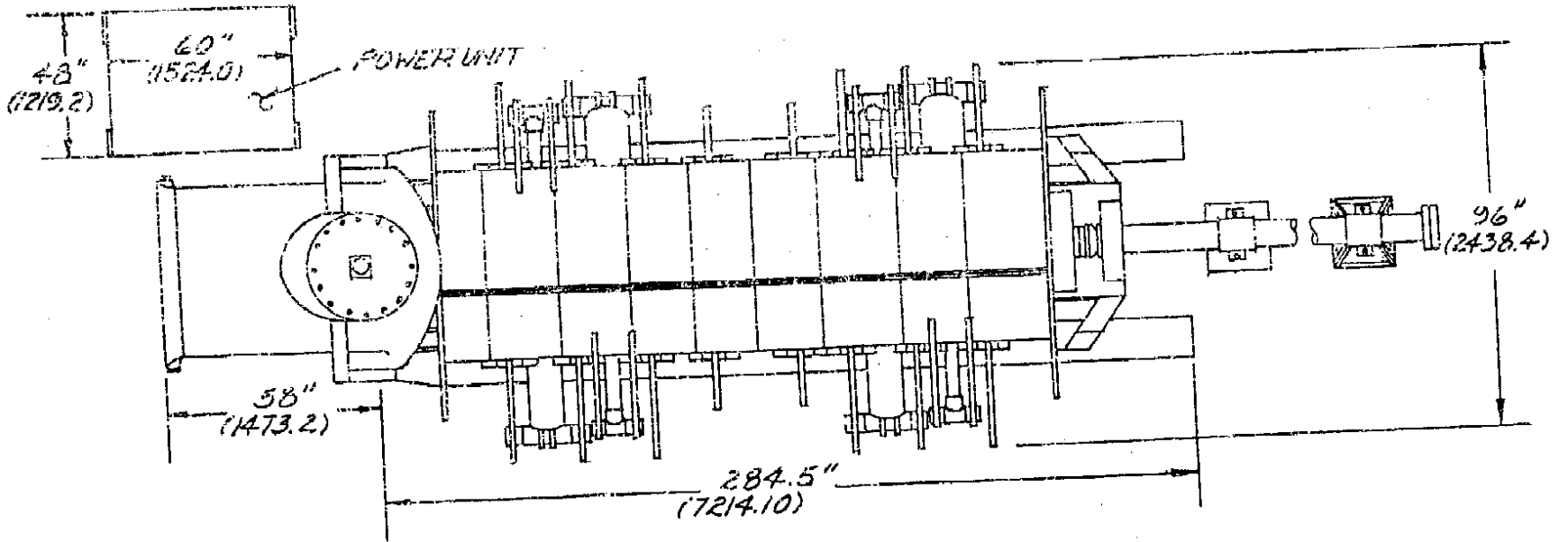
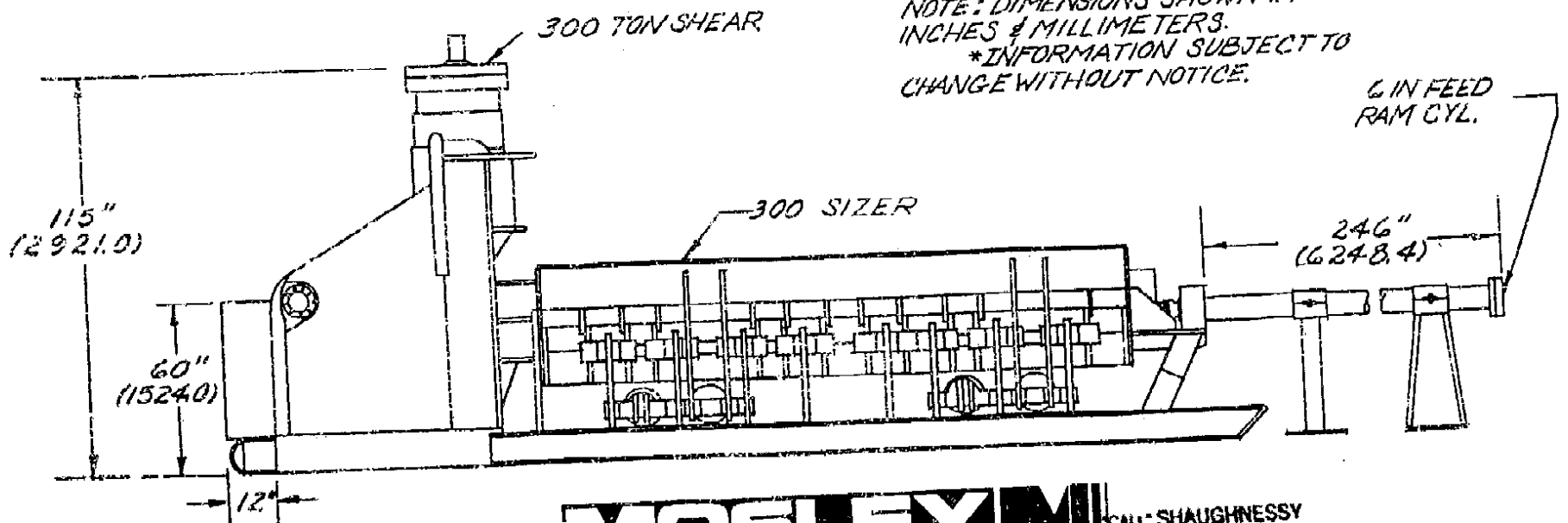


330 SHEAR & SIZER



NOTE: DIMENSIONS SHOWN IN INCHES & MILLIMETERS.
*INFORMATION SUBJECT TO CHANGE WITHOUT NOTICE.



MOSLEY

CALL SHAUGHNESSY
P.O. BOX 207
DERBY N.Y. 14047
1-800-549-0490

"CALL SHAUGHNESSY"
 PO Box 874
 Hamburg, NY 14075
 1 800 549 0490

HS 330 SHEAR SPECIFICATION

Best Application:

Auto Scrap, #2 General Scrap, Selected
 #1 Scrap

I. Capacities:

A. Shear Head:

1. Shearing Force:
2. Shearing Capacity:

300 Tons
 1 1/2" x 29" plate, 3 1/2" dia. round
 (mild steel)
 29" wide x 18" high

3. Shear Throat:
4. Cuts Per Minute:
 (Unloaded)
5. Length of Cut:

5 to 6
 6" to 36"

B. Sizer Box Dimensions:

1. Open:
2. Closed:

82" wide x 34" deep x 240" long
 28" wide x 20" deep x 240" long

C. Compression Capacity: (Sizer)

120 Tons Closing Force per Side

D. Feed Ram Force:

800 PSI - 11.2 Tons

E. Weight and Dimensions:

Shipping Weight 65,000 Lbs.
 Overall Dimensions 20' x 50' Area

II. Power Unit:

A. Motors:

1. Main Pumps:

100 HP, 230/460 Volt, 3 ϕ , 60 Hertz,
 1750 RPM, Drip/Proof Enclosure
 @ 230 V. - 246 Full Load Amps.
 @ 460 V. - 125 Full Load Amps.

2. Filter Motor:

1/2 HP, 230/460 Volt, 3 ϕ , 60 Hertz
 1750 RPM, Drip/Proof Enclosure

B. Electrical:

1. Starter:
2. Control Panel:
3. Limit Switches:

100 HP Reduced Voltage Starter
 Nema 12 Switch Enclosure
 Watertight,
 Plug-in Type

"CALL SHAUGHNESSY"
 PO Box 874
 Hamburg, NY 14075
 1 800 549 0490

III. Controls:

A. Electrical:

Push-Button Panel for Solenoid Operated
 Valves, Nema 12.

HS 330 SHEAR SPECIFICATIONS

"CALL SHAUGHNESSY"
PO Box 874
Hamburg, NY 14075
1 800 549 0480

VII. General:

A. Quality:

All Mosley products are assembled and tested under job-related conditions prior to shipment.

B. Installation:

Recommended foundation requirements are provided. Foundation design will vary with soil conditions and is customer's responsibility.

C. Layout Planning:

Technical services are available in assisting with yard layout for locating equipment.

D. Start-Up Service:

Mosley will provide services of a qualified start-up technician for a period of five (5) days. He will supervise the installation and start up and instruct your operators in use of the equipment.

E. Expenses to be Assumed By Purchaser:

1. Freight from Waco, Texas to destination.
2. Rigging cost to unload and set up.
3. Preparation of foundation.
4. Wiring to starter box on machine.
5. Miscellaneous installation costs.
6. Necessary hydraulic oil.

VIII. Options:

A. Load Deck:

Hydraulically operated, 92" x 240" heavy steel construction

B. Diesel Power:

135 HP diesel drive

C. Crane:

Hydraulic knuckleboom cranes equipped with shear controls in crane cab for one-man system operation.

Specifications are subject to change without notice.

"CALL SHAUGHNESSY"
PO Box 874
Hamburg, NY 14075
1 800 549 0480