

5250 Roll-off Baler/Logger

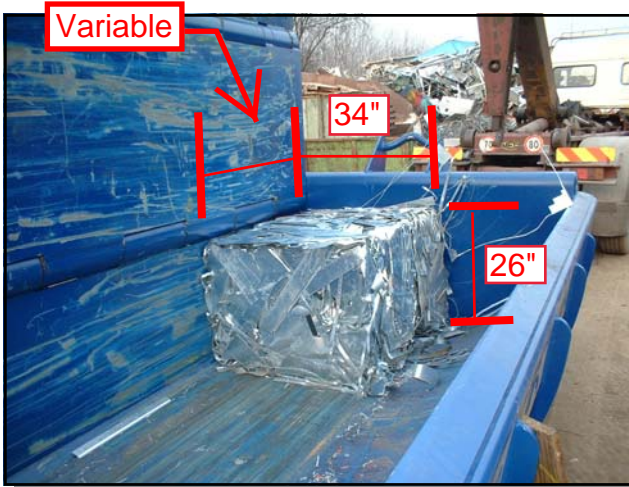


Standard Model: Roll-off diesel with Crane, 17 ft. 4 in. box

Available options: Without Crane
Remote Control

Standard features: Roll-off system
Crane

Production: Baling: 6-8 Tons per hour
Logging: 6-10 Tons per hour



5250 Roll-off Baler/Logger



SPECIFICATIONS:

DIESEL POWER:	4 CYLINDER TURBO DIESEL
HYDRAULIC:	REXROTH VARIABLE DISPLACEMENT PUMP MAXIMUM OPERATING PRESSURE 3350 PSI COMPLETE SYSTEM RELIEF PROTECTION HIGH PRESSURE GEAR PUMP PILOT PRESSURE GEAR PUMP
CRANE:	22 ft. BOOM REACH FOUR POINT ORANGE PEEL GRAPPLE WITH ROTATOR
CONSTRUCTION:	STRUCTURAL, WELDOX 700 BOX, HARDOX 500 WEAR RESISTANT
CYLINDERS:	(1) MAIN COMPRESSION (4) FOLDING BOX RAMS
CYLINDER FORCES:	MAIN COMPRESSION, 160 TONS FOLDING BOX, 210 TONS EACH SIDE
FOLDING BOX DIMENSIONS:	17 ft. 4 in. X 5 ft. 4 in. OPEN 17 ft. 4 in. LONG X 34 in. WIDE X 26 in. HIGH - CLOSED
BALE / LOG SIZE: BALE / LOG WEIGHT:	34 in. X 26 in. X VARIABLE 1100 LBS AVERAGE
TRANSPORT DIMENSIONS:	24 ft. 7 in. LONG 99 in. WIDE 106 in. TALL
WEIGHT:	48,400 Lbs
CAPACITIES:	DIESEL TANK, 30 GALLONS HYDRAULIC TANK, 160 GALLONS

SIERRA INTERNATIONAL MACHINERY, LLC.
1620 E. Brundage Lane, Bakersfield, CA 93307

USA (800)343-8503 - (661)327-7073 - FAX (661)322-8759

www.sierraintl.com

***Sierra reserves the right to change specifications at any time without notice.**

5250 Roll-off Baler/Logger

