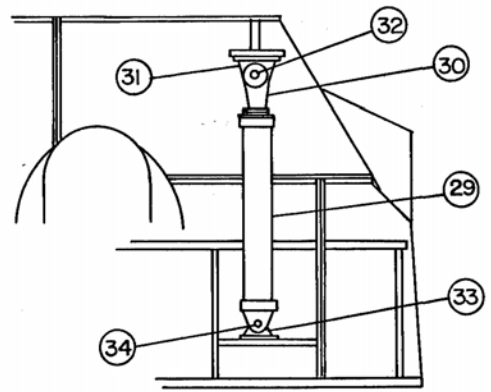
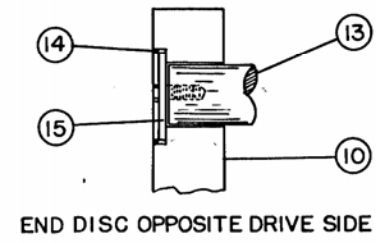
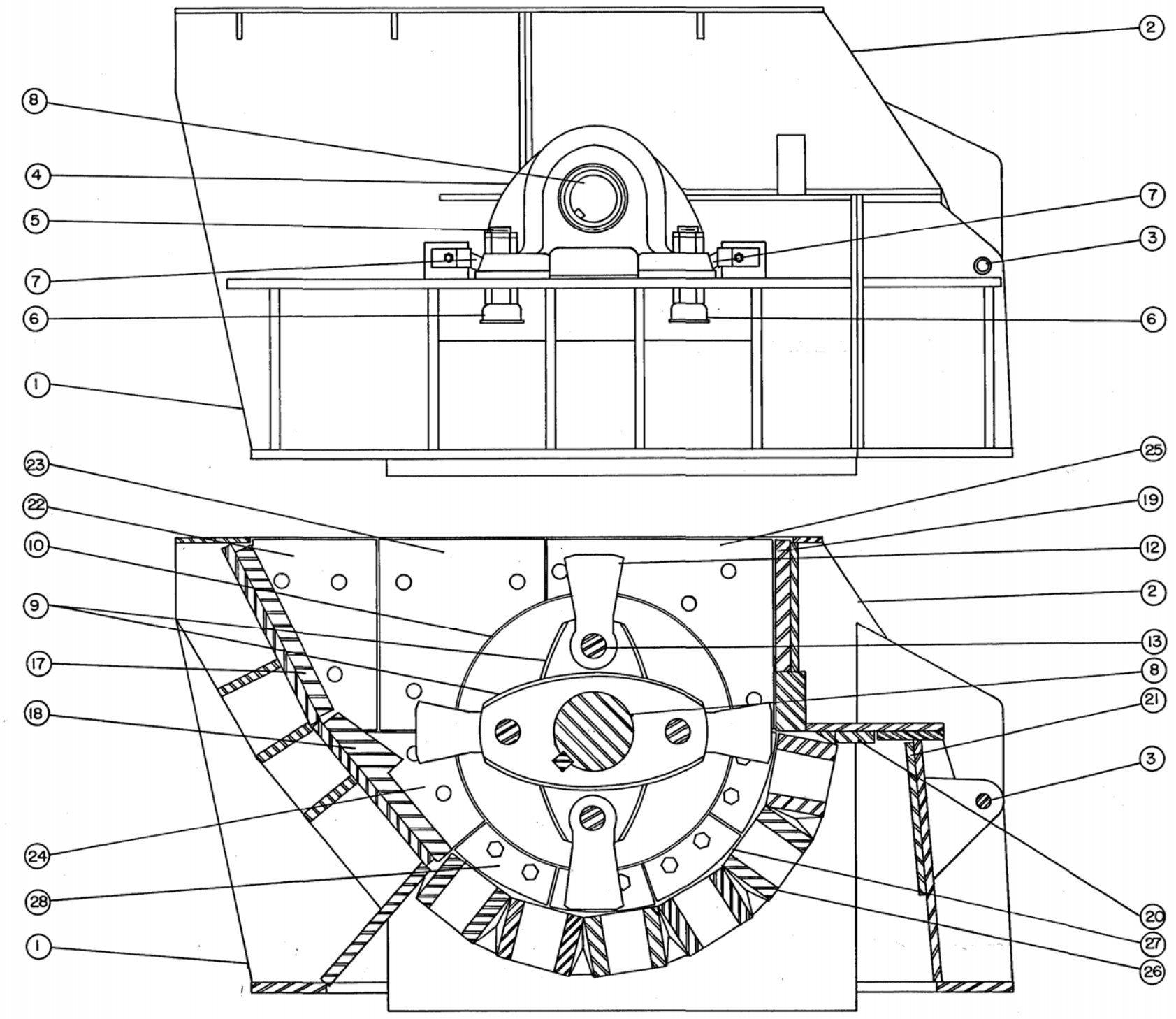


Item	When ordering repairs give { Part Wanted, also How Many This Drwg. Number Your Mill Number	Pattern Number	Quantity in Machine	Code
1	MILL BOTTOM		1	
2	MILL COVER		1	
3	HINGE PIN		2	
4	BEARING (SEE SEPARATE PARTS LIST)		2	
5	BEARING HOLD DOWN BOLT (LESS NUTS)		8	
6	BEARING HOLD DOWN BOLT ROD HEATER		8	
7	BEARING TAPERED LOCKING KEY		4	
8	MILL SHAFT (INCLUDES SHAFT, KEY, BEARING NUTS & LOCKS)		1	
9	CENTER DISC		VARIES	
10	END DISC		2	
11	DISC LOCK NUT (NOT SHOWN)		2	
12	HAMMER		VARIES	
13	HAMMER BOLT		4	
14	HAMMER BOLT INSERT (OPPOSITE DRIVE END WELDED IN PLACE)		4	
15	HAMMER BOLT RETAINER DISC SERRATED		4	
16	HAMMER BOLT RETAINER 1/2 DISC (DRIVE END) (WELDED IN PLACE - NOT SHOWN)		4	
17	BREAKER PLATE (SMOOTH)	6S-711	VARIES	
18	BREAKER PLATE STEP OFF	6S-810	VARIES	
19	CROSS LINER COVER		VARIES	
20	CROSS LINER COVER LOWER		VARIES	
21	CROSS LINER REAR WALL		VARIES	
22	SIDE LINER R.H. & L. H.		1 EACH	
23	SIDE LINER R.H. & L. H.		1 EACH	
24	SIDE LINER R.H. & L. H.		1 EACH	
25	SIDE LINER R.H. & L. H.		1 EACH	
26	CAGE BAR		VARIES	
27	CAGE BAR LOCKING WEDGE		VARIES	
28	CAGE BAR RETAINER		8	
	THE FOLLOWING ITEMS ARE SUPPLIED ONLY IF OPENING SYSTEM IS SUPPLIED			



ITEMS 29 THRU 34 USED ONLY WHEN COVER OPENING SYSTEM IS FURNISHED



USE WITH DWG. 144J-B-4355

THIS DRAWING AND THE INFORMATION IT CONTAINS IS CONFIDENTIAL AND THE PROPERTY OF WILLIAMS PATENT CRUSHER AND PULVERIZER CO. AND MUST NOT BE MISUSED OR COPIED IN ENTIRE OR IN PART WITHOUT OUR WRITTEN PERMISSION.

THIS PRINT WAS ISSUED		THIS DRG. SUPERSEDED BY		THIS DRG. SUPERSEDES		WILLIAMS PATENT CRUSHER AND PULVERIZER CO. ST. LOUIS, MO.	
ZONE	SYM.	DATE	INITIALS	TOLERANCES		PARTS LIST 700 SERIES C N SHREDDER	
				Fractional Dimensions $\pm \frac{1}{64}$ "		DRAWN BY CR	
				Decimal Dimensions Zero to 7.999" $\pm .001$ "		TRACED BY SCALE	
				From 8" to $\pm .002$ "		DATE O-KH	
				All Threads U.S. Form 8C.		APPROVED BY	
				Class 2 unless otherwise noted		DWG. NO. 144J-D-7989	
				REVISION DESCRIPTION		CHECKED BY	