

DESIGN LOAD DATA:
 FOUNDATION DESIGN LOAD DATA FOR MAIN SHREDDER PEDESTAL. THIS INCLUDES SHREDDER, FEED CHUTE, FEED ROLLS AND STRUCTURAL SUB BASE.

VERTICAL DEAD LOAD: 260,000 LBS APPROXIMATE
 EQUALLY SUPPORTED OVER 6 VIBRATION ISOLATORS

VERTICAL DYNAMIC LOAD: 39,315 LBS TYPICAL, 78,630 MAX
 HORIZONTAL DYNAMIC LOAD: 39,315 LBS TYPICAL, 78,630 MAX
 (ISOLATORS WILL DAMPEN 95% OF THE DYNAMIC LOAD)

DYNAMIC LOADS ACT THROUGH CENTERLINE OF SHREDDER AND ROTATE AT 10 Hz

PIN PULLER W/JIB CRANE LOAD:
 VERTICAL DEAD LOAD WITH LOADED CRANE IS 24,000 LBS APROX.
 HORIZONTAL FORCE OF 151,000 LBS

ROTOR WK²: 73,000 LB-FT²

SPRING ISOLATOR DATA EACH (6 TOTAL):

STATIC LOAD: MAX. - 63,500 LBS [28,804 kg]
 MIN. - 44,100 LBS [20,004 kg]
 SPRING RATE: AXIAL - 39,376 LBS/IN
 RADIAL - 10,360 LBS/IN
 DAMPING: AXIAL - 1600 LB-SEC/IN
 RADIAL - 1712 LB-SEC/IN
 SHIPPING WEIGHT: - 420 LBS [191 kg]

MACHINE: LEFT HAND DRIVE SHOWN
FEED ROLL: LEFT HAND DRIVE SHOWN

NOTES:

1. WELDS TO BE EQUALLY SPACED AROUND VIBRATION ISOLATORS, TOP AND BOTTOM (6 PLACES)
2. CLEARANCE FOR HAMMER SHAFT REMOVAL
3. CLEARANCE REQUIRED FOR FEED ROLL DRIVE
4. 1 [25.4] SHIM & GROUT. USE NON-SHRINK GROUT AS RECOMMENDED BY GROUT MANUFACTURER
5. ANCHOR BOLTS, NUTS & WASHERS TO BE SUPPLIED BY CUSTOMER

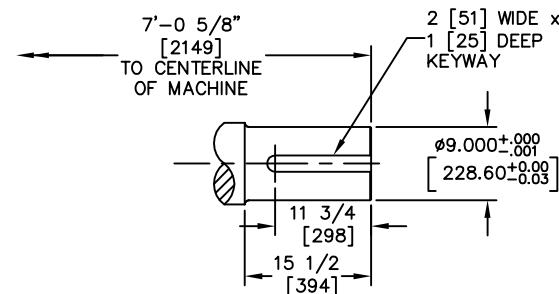
WEIGHTS:

1. FEED CHUTE W/ SUPPORTS: 31,000 LBS [14,062 kg]
2. 64 x 86 SHREDDER: 150,000 LBS [68,040 kg]
3. PIN PULLER W/ CRANE: 9,500 LBS [4,313 kg]
4. DISCHARGE HOPPER: 7,000 LBS [3,175 kg]
5. UNIVERSAL JOINT COUPLING: 2,800 LBS [1,270 kg]
6. FEED ROLL ASSEMBLY: 32,000 LBS [14,515 kg]
7. LOWER SUPPORT STRUCTURE: 22,000 LBS [9,979 kg]
8. ROTOR ASSEMBLY W/ HAMMERS: 36,100 LBS [16,400 kg]

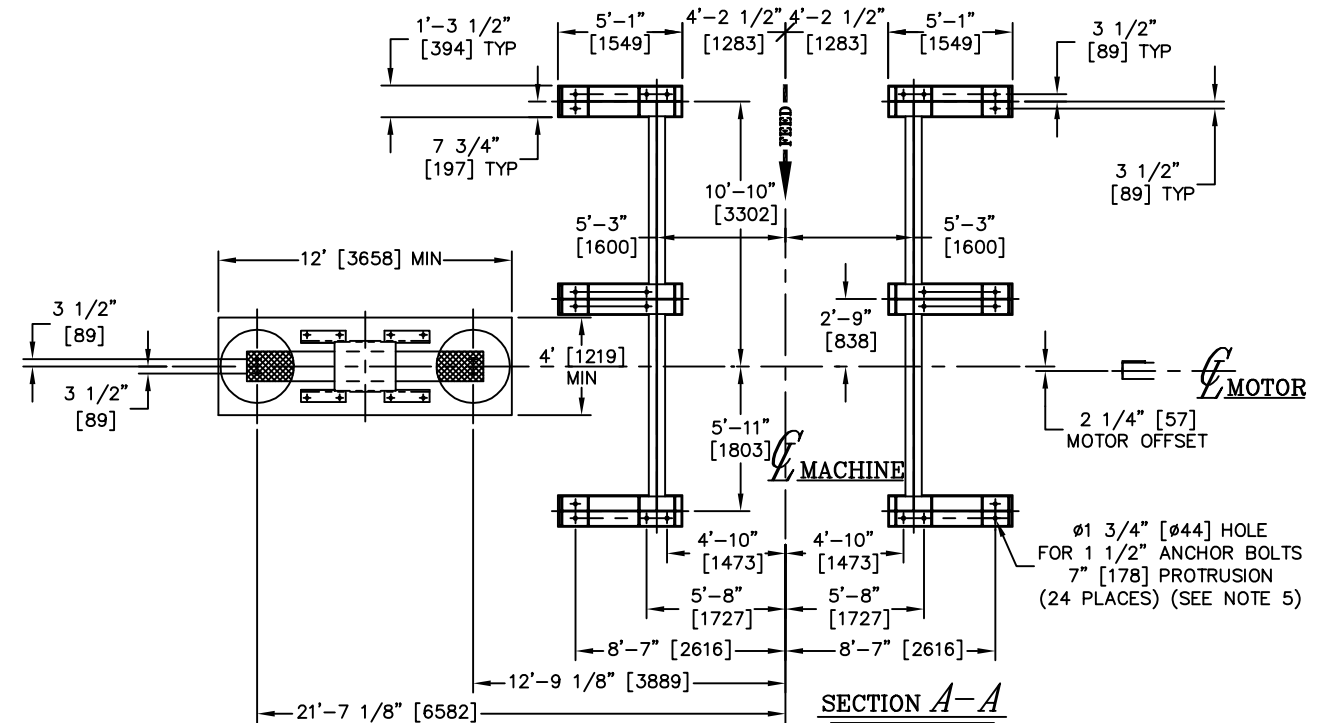
FOUNDATION NOTES:

ALL FOOTINGS AND FOUNDATIONS TO BE CONSTRUCTED OF REINFORCES CONCRETE IN ACCORDANCE WITH BEST LOCALLY APPROVED PRACTICE. FOOTINGS AND FOUNDATION TO CONSIST OF SUFFICIENT BASE AREA TO PREVENT SETTLING AND MUST EXTEND BELOW MAXIMUM FROST LINE. FOOTING AND FOUNDATION TO BE PLACED ON PILINGS OR UNDISTURBED OR PROPERLY COMPACTED SOIL OF ADEQUATE BEARING CAPACITY FOR SPECIFIED LOADS. MACHINE, MOTOR AND PIN PULLER PEDESTALS TO BE ONE PIECE. SHIMMING UNDER THE MOTOR WILL BE REQUIRED.

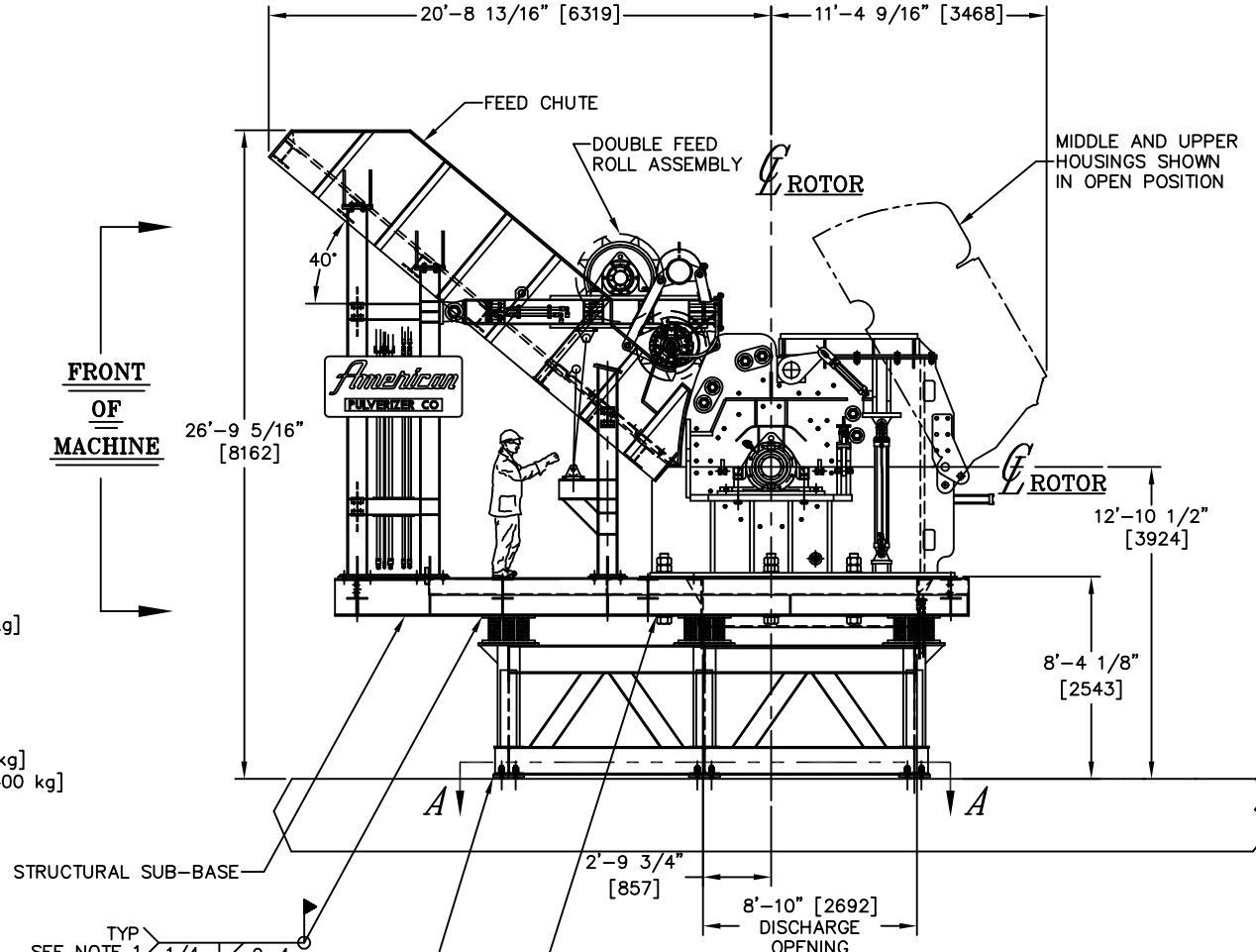
BOLTS MUST BE INSTALLED IN STRUCTURAL SUB-BASE BEFORE INSTALLING MACHINE LOWER HOUSING



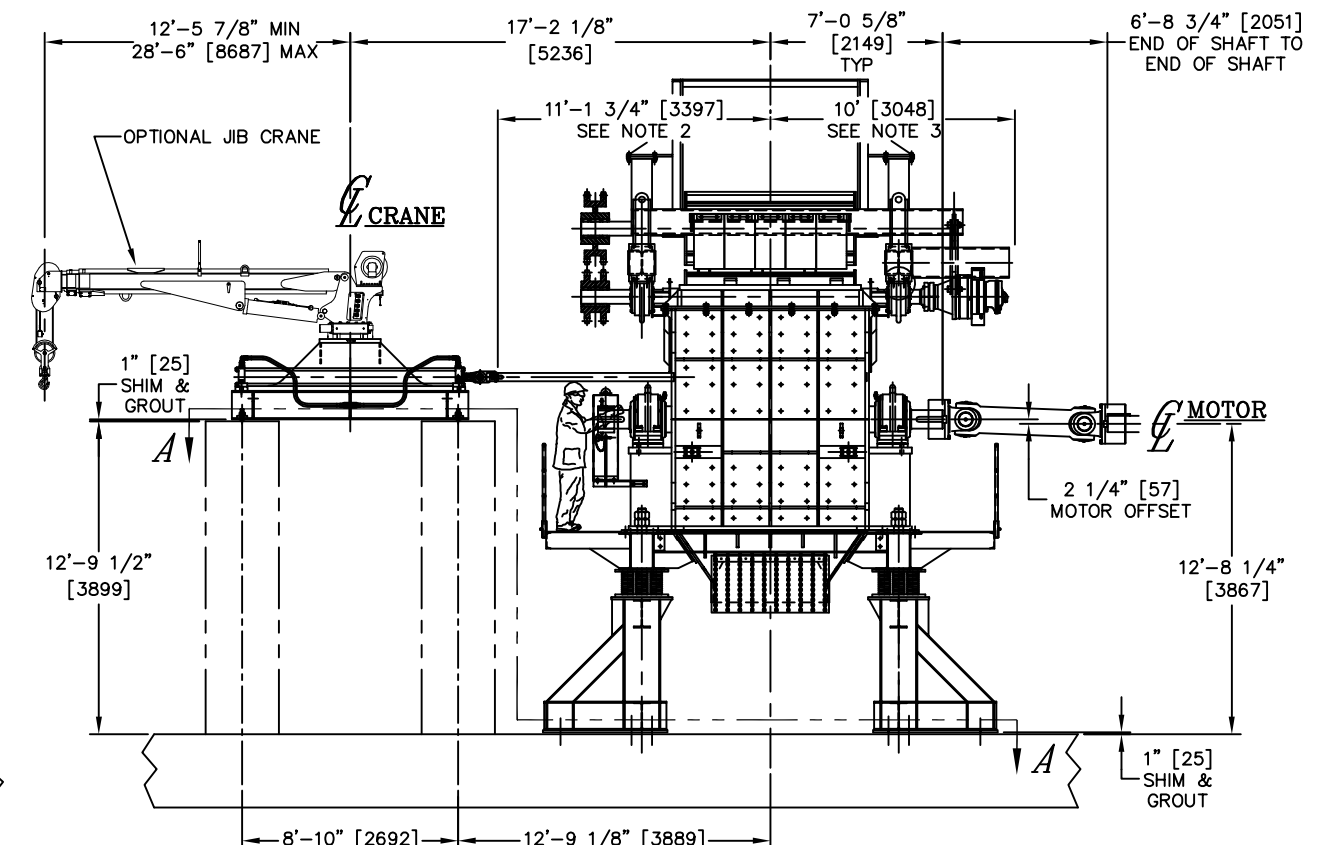
DETAIL OF ROTOR SHAFT ENDS
 SCALE: 1=1'-0"



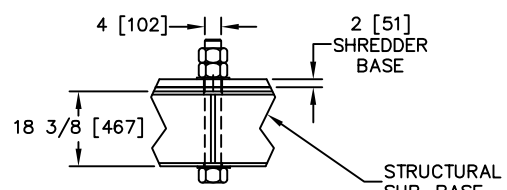
SECTION A-A



FRONT OF MACHINE



OPTIONAL JIB CRANE



DETAIL OF SHREDDER MOUNTING BOLTS (QTY 6)
 SCALE: 1/2=1'-0"

This Drawing is the Property of the AMERICAN PULVERIZER CO. Not to be Copied or Loaned

MACHINE	DRAWING NO.	QTY

REV.	DATE	DESCRIPTION

AMERICAN PULVERIZER Co.
 ST. LOUIS, MO., U. S. A.

PART NO. - PAT. NO. - MATL. -
 MACHINE NO. 64 x 86 TYPE: FRONT FEED

CLEARANCE AND FOUNDATION PLAN

DRG. BY: GAM DATE: 8-22-2014 DRAWING NO. FILE REV.
 CHECKED: SCALE: 1/4"=1'-0" A-25606 2
 APPROVED: SHEET 1 OF 2
 SUPERSEDED BY: SUPERSEDES:

DIMENSIONS ARE IN FT & IN [mm]