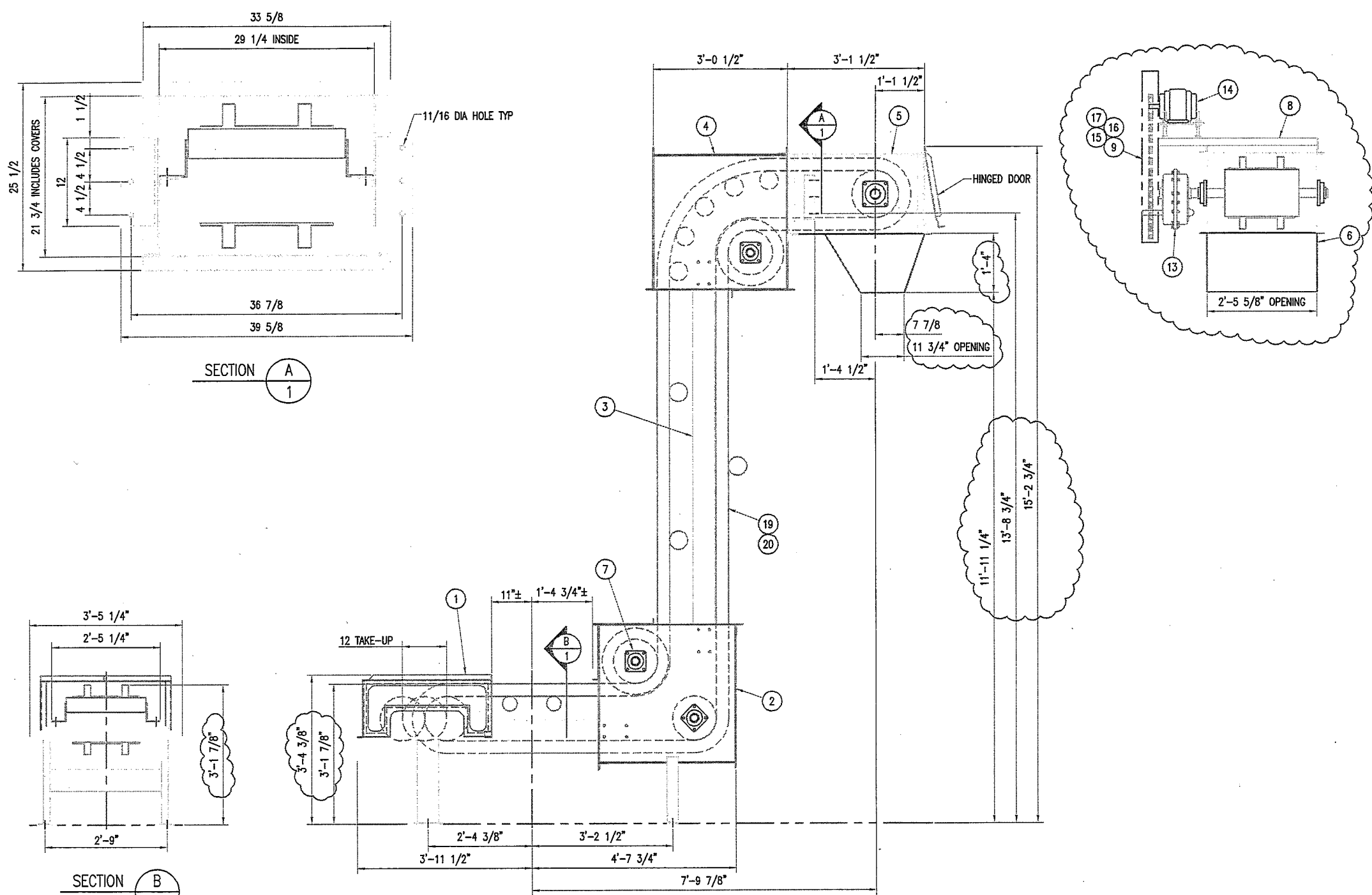


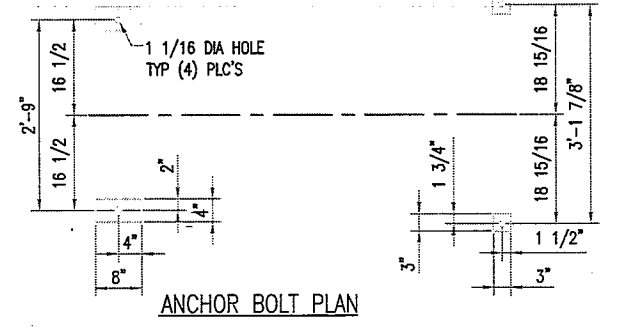
This drawing and all the information thereon is the property of Cambelt International and is confidential and must not be made public or copied. This drawing is loaned, subject to return upon demand, and is not to be used directly or indirectly in any way or it would be detrimental to our interest.

R E V I S I O N					
Sym	Zone	Description	By	Date	App
A		REVISED PER CUSTOMER COMMENTS	KB	11/8/10	



- NOTES:**
1. PRODUCT: CABLE AND WIRE CHOP
  2. BULK DENSITY: APPROX 170 PCF
  3. PARTICLE SIZE: -1/8"
  4. BELT: 2 PLY POLY FABRIC, 220 PIW, SBR BLACK RUBBER
  5. BELT SPEED: 135 FPM
  6. MOTOR: 5 HP, 1750 RPM, 3 PH, 60 HZ, 230/460 V TEFC, 184T FRAME
  7. HEAD PULLEY: 12" DIA. X 20" FACE CROWNED DRUM TYPE W/ 3/8" SBR HERRINGBONE LAGGING  
SHAFT: 2 7/16" DIA. 1045 CRS
  8. TAIL PULLEY: 12" DIA. X 20" FACE CROWNED SPIRAL WING TYPE  
SHAFT: 2 7/16" DIA. 1045 CRS
  9. TURN PULLEY: 12" DIA. X 20" FACE CROWNED DRUM PULLEY WITH BAND  
TURN DISCS: 12" DIA. INNER, 18" DIA. OUTER  
SHAFT: 1 15/16" DIA. 1045 CRS
  10. IDLERS: 4" DIA. CEMA B SEALED FOR LIFE FLAT IDLERS ON THE CARRY SIDE AND 5" DIA. CEMA C SEALED FOR LIFE FLAT IDLERS ON THE DECREASING TURN
  11. BEARING: ANTI-FRICTION BALL BEARING TYPE (DODGE SC OR EQUAL)
  12. SERIAL #: 3356
  13. PAINT: ONE COAT CAMBELT BLUE HIGH BUILD EPOXY
  14. FINAL ASSEMBLY, ERECTION, ELECTRICAL WIRING & CONCRETE BY OTHERS

This document/dwg. is submitted ....  
**- FOR APPROVAL -**  
 The customer (or his agent) is responsible for approving all dimensions that are relative to the placement of this equipment with respect to the building structure and other equipment.  
 Approved ..... Date .....  
 Appr'd as noted ..... Date .....  
 Revise & resubmit ..... Date .....

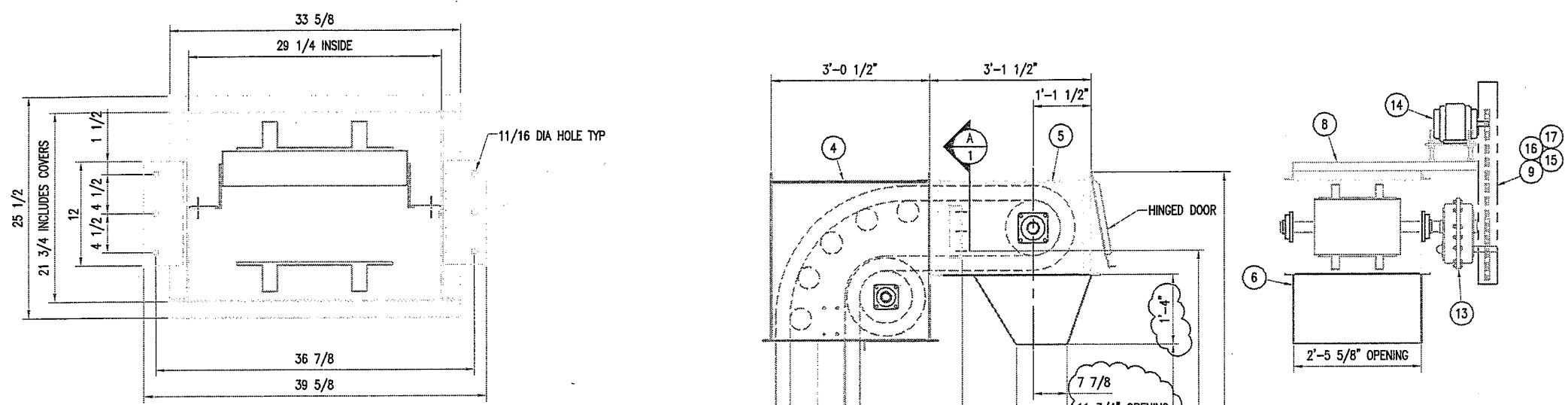


**CAUTION!**  
 DO NOT WELD TO CONVEYOR HOUSING  
 AFTER THE BELT IS INSTALLED

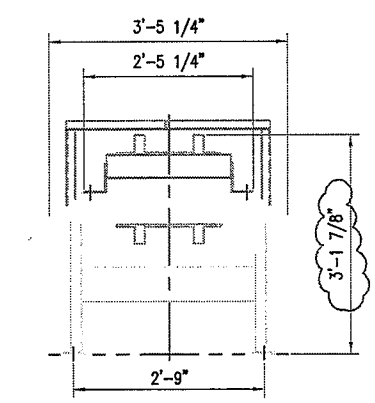
QTY./DASH NO.	ITEM NO.	PART NO.	DESCRIPTION	MAT'L SPEC	WEIGHT
-02	-01				
Drawn by: KELLY	Date: 10/29/10	Cambelt International Corp. 2820 West 1100 South, Salt Lake City, Utah 84104, Phone (801) 972-5511			
Checker:		GENERAL ARRANGEMENT DRAWING MODEL CWR1830-12 7" CAMWALL CONVEYOR "B"			
Engr. Hgr.:		OMNISOURCE			
Mfg.:		Size: D	Drawing No. 1103011	REV A	
Release:		Scale: 3/4"=1'-0"	Do Not Seal Drawing	Sheet 2 of 2	
Unless Otherwise Specified Dimensions are in inches Tolerances on: fractions .X .XX .XXX ±1/16 ±.1 ±.03 ±.010 ±.1/2"					

This drawing and all the information thereon is the property of Cambelt International and is confidential and must not be made public or copied. This drawing is loaned, subject to return upon demand, and is not to be used directly or indirectly in any way as it would be detrimental to our interest.

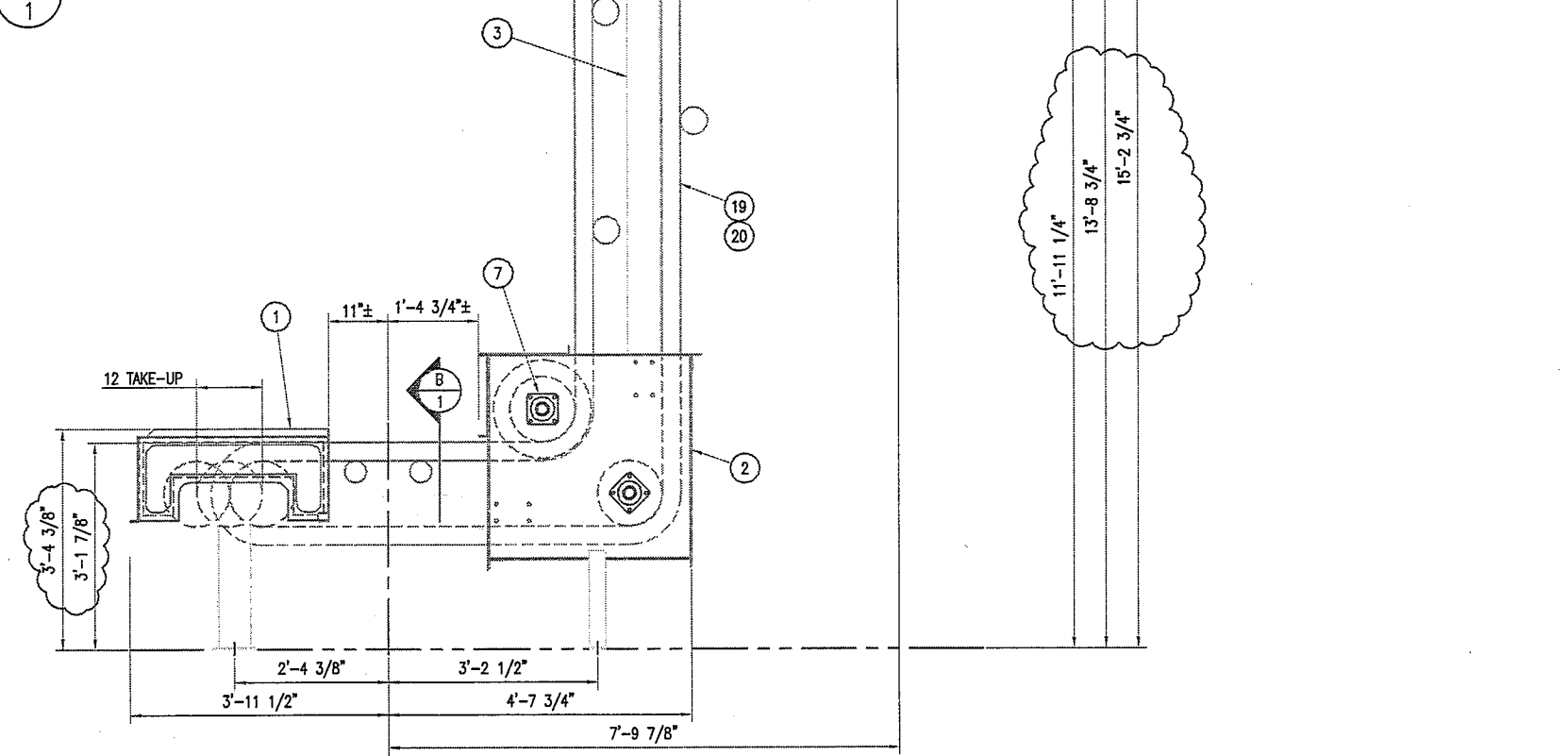
R E V I S I O N					
Sym	Zone	Description	By	Date	App
A		REVISED PER CUSTOMER COMMENTS	KB	11/8/10	



SECTION A  
1

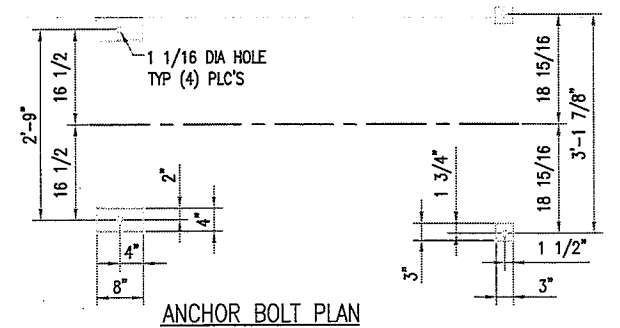


SECTION B  
1



- NOTES:**
1. PRODUCT: CABLE AND WIRE CHOP
  2. BULK DENSITY: APPROX 170 PCF
  3. PARTICLE SIZE: -1/8"
  4. BELT: , 2 PLY POLY FABRIC, 220 PIW, SBR BLACK RUBBER
  5. BELT SPEED: 135 FPM
  6. MOTOR: 5 HP, 1750 RPM, 3 PH, 60 HZ, 230/460 V TEFC, 184T FRAME
  7. HEAD PULLEY: 12" DIA. X 20" FACE CROWNED DRUM TYPE W/ 3/8" SBR HERRINGBONE LAGGING  
SHAFT: 2 7/16" DIA. 1045 CRS
  8. TAIL PULLEY: 12" DIA. X 20" FACE CROWNED SPIRAL WING TYPE  
SHAFT: 2 7/16" DIA. 1045 CRS
  9. TURN PULLEY: 12" DIA. X 20" FACE CROWNED DRUM PULLEY WITH BAND  
TURN DISCS: 12" DIA. INNER, 18" DIA OUTER  
SHAFT: 1 15/16" DIA. 1045 CRS
  10. IDLERS: 4" DIA. CEMA B SEALED FOR LIFE FLAT IDLERS ON THE CARRY SIDE AND 5" DIA. CEMA C SEALED FOR LIFE FLAT IDLERS ON THE DECREASING TURN
  11. BEARING: ANTI-FRICTION BALL BEARING TYPE (DODGE SC OR EQUAL)
  12. SERIAL #: 3355
  13. PAINT: ONE COAT CAMBELT BLUE HIGH BUILD EPOXY
  14. FINAL ASSEMBLY, ERECTION, ELECTRICAL WIRING & CONCRETE BY OTHERS

This document/dwg. is submitted ....  
**- FOR APPROVAL -**  
 The customer (or his agent) is responsible for approving all dimensions that are relative to the placement of this equipment with respect to the building structure and other equipment.  
 Approved ..... Date .....  
 Appr'd as noted ..... Date .....  
 Revise & resubmit ..... Date .....



**CAUTION!**  
 DO NOT WELD TO CONVEYOR HOUSING  
 AFTER THE BELT IS INSTALLED

QTY./DASH NO.	ITEM NO.	PART NO.	DESCRIPTION	MAT'L SPEC	WEIGHT
-02	-01				
Drawn by	KELLY	Date	10/29/10	Cambelt International Corp. 2820 West 1100 South, Salt Lake City, Utah 84104, Phone (801) 972-8511	
Checker		GENERAL ARRANGEMENT DRAWING MODEL CWR1830-12 "Z" CAMWALL CONVEYOR "A"			
Engr. Mgr.		OMNISOURCE			
Mfg.		Size	Drawing No.	REV	
Release		D	1103011	A	
Unless Otherwise Specified Dimensions are in inches Tolerances on: fractions .x .XX .XXX decimals ±.01 ±.03 ±.010 angles ±1/2°					
Scale		3/4"=1'-0"		Do Not Scale Drawing	Sheet 1 of 2