

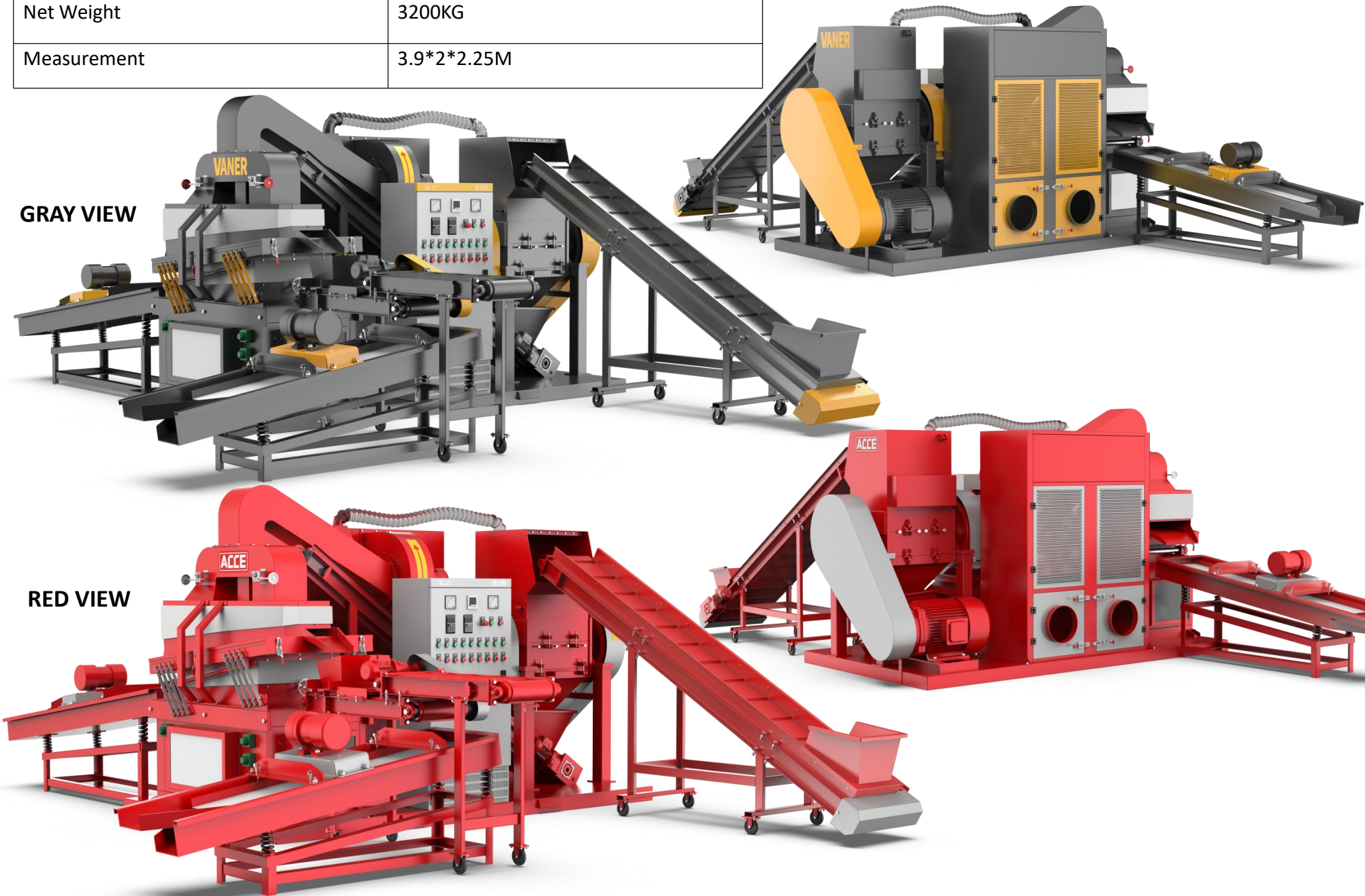
V-S30 WIRE GRANULATOR MACHINE 400~500KG/H

V- S30 copper wire granulate machine is our company developed a kind of complete production lines processing scrap cables to copper granules and plastic granules for recycling purpose. Processing cable species including car cable, communication cables and miscellaneous cables which size between 0.1~30mm (If cable is single conductor then have better is 0.2~0.3mm). The device uses an integrated structure, space-saving, stable and reliable performance and its working principle is the machine shredder crushing scrap cables then through vibration and air blowing to separate copper and plastic granules.

- Machine all mostly parts are connected with the control panel which has matched number in every parts.
- Machine heavy but needn't occupy too much space and installation convenience.
- Operation reliable and easier performance.
- Copper separation rate is 99.99%

Parameters	
Model	V-S30
Wire Range	0.1~30MM
Power	49.11KW
Output	400~500KG/H
Net Weight	3200KG
Measurement	3.9*2*2.25M

GRAY VIEW

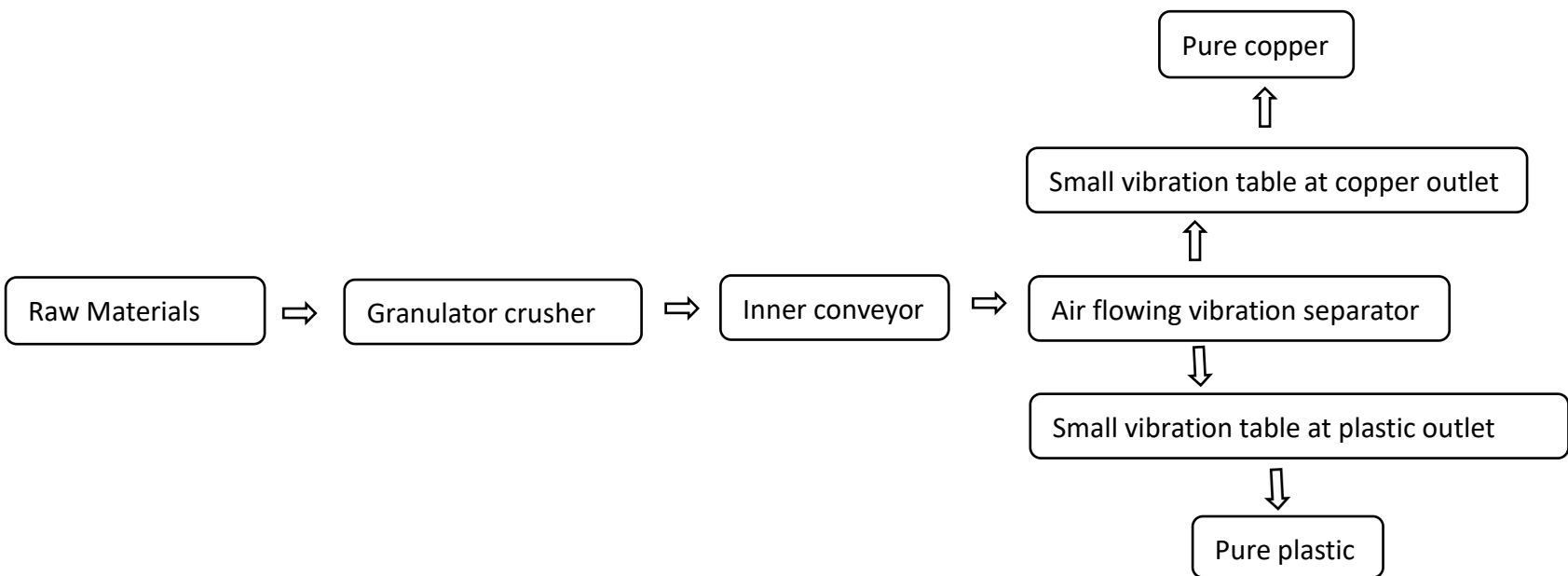


RED VIEW

THE RAW MATERIALS CAN BE PROCESSED BY THE MACHINE



S30 WORKING FLOW CHART



S30 MACHINE LIST



Main machine - 1 unit



Small vibration table - 2 units



Magnetic separator for copper - 1 unit



Feeding conveyor - 1 unit

S30 NOT INCLUDING THE CONVEYOR, NEED BUY EXRTA

S30 THE MORE DETAILS FOR EACH PART OF THE MACHINE



Name: Air flowing vibration separator
Power: 1.5kw
Quantity:1 unit
Function: Separating crushed and mixed cables granules into pure copper and pure plastic .



Name: Granulator crusher
Power: 37kw
Quantity: 1 unit
Function: Crushing raw cables into small granules.



Name: Small vibration tables
Power: 0.18kw*2
Quantity: 2 units
Function: separate the copper and plastic granules again that out from two outlets .



Name: Inner conveyor belt
Power: 0.75kw
Quantity: 1 unit
Function: Transmit the crushed cables into the air flowing vibration separator.



Name: Dust Collector
Quantity: 1 unit
Function: Collect the dust happened when the machine working.



Name: Magnetic separator
Power: 1.5kw
Quantity: 1 unit
Function: Separate other metals from copper granules.



Name: Air system (air blower + air suction)
Power: 4kw+4kw
Quantity: 1 set
Function: Collect dust and make plastic granules separate from coppers .



Name: Electric carbinet
Quantity: 1 unit
Function: Control machine all part working well.

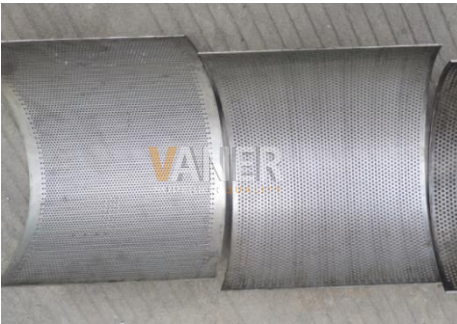


Name: Feeding conveyor
Quantity: 1 unit
Function: Feeding raw materials into the granulator crusher.
*** The conveyor not included S30 default device, need buy extra.**

SPARE PARTS LIST



BLADES --- 1 SET
(fix and rotary blades).
Materials: SKD-11
Quotation: 10pcs rotary blades + 4pcs fixed blades.
Details: install on the machine.



CRUSHER SIEVES --- 3 PIECES
(crusher sieves' hole diameter are 3mm/4mm/5mm).
Details: one of install on the machine, rest two are extra.
Quantity: 1-3mm/1-4mm/1-5mm



SEPARATOR SIEVES --- 2 PIECES
(Separators' sieves diameters are 200mesh and 250mesh)
Details: 200mesh will install on the machine.
Quantity: 1-200mesh/1-250mesh



SMALL VIBRATION TABLE SIEVES --- 3 PIECES
(small vibration table's sieves diameters are 16,18 and 14mesh)
Details: The 16 and 18 mesh is used for copper side. The 14 is used for plastic side.
Quantity: 1-16/1-18/1-14



Tool Box --- 1 SET
Usage: used for fix and maintain the machine.

S30 INSTALLATION REFERENCE PICTURES



Export to Canada



Export to Germany



Export to Thailand